



CAPITOL
Suites

SIMPLY LUXURIOUS

Capitol Suites

Developed By The Capitol Group

Architect

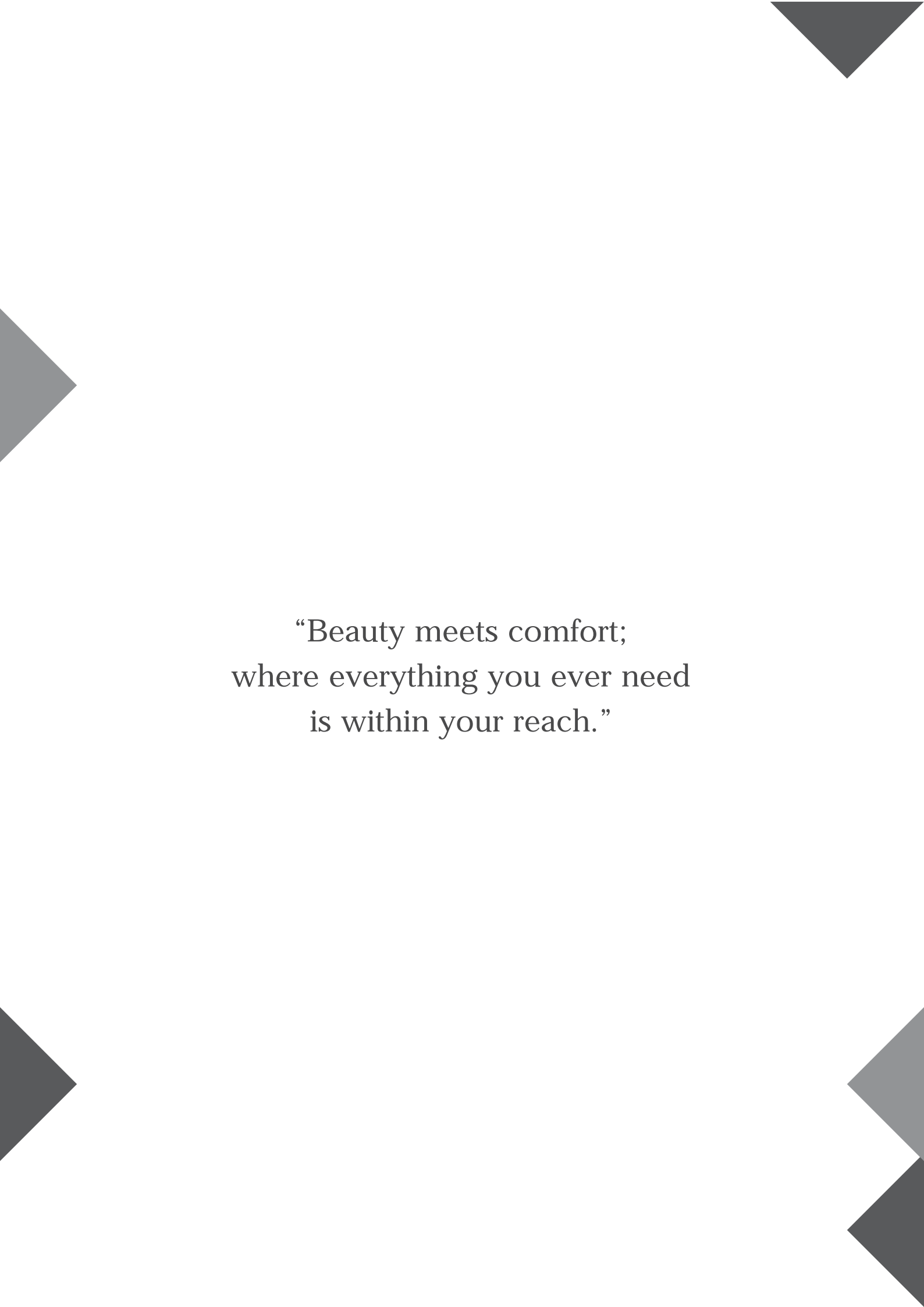
Wow Architects, Singapore

Interior Design

Genius Loci, Singapore

While every reasonable care has been taken in the preparation of this brochure and information document, the developer and its agent cannot be held responsible for any inaccuracies.

All elements are intended to be correct but are not regarded as statement or representation of fact



“Beauty meets comfort;
where everything you ever need
is within your reach.”

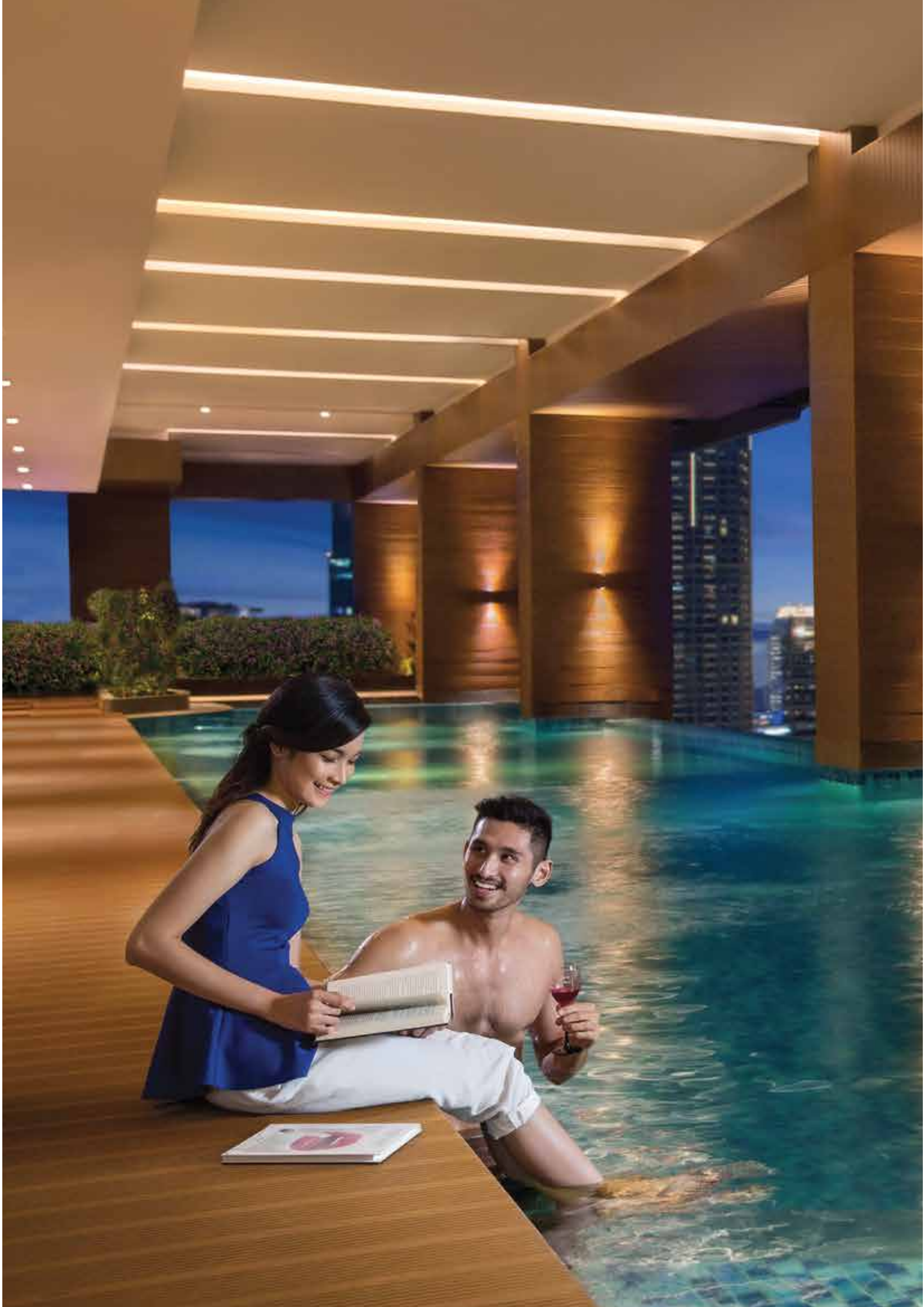
An aerial photograph of a city, likely Singapore, showing a mix of modern skyscrapers and older buildings. A large, semi-transparent blue geometric shape, resembling a stylized 'X' or a diamond, is overlaid on the image. The text is positioned in the upper left quadrant of this shape.

Introducing

Our Luxurious Apartment for
a **Life of Indulgence**



Capitol Suites



Enjoy the Best Life Has to Offer

Experience the new meaning of pleasure with our Indoor Infinity Pool, with a breathtaking view of the city.



SEMI INDOOR INFINITY POOL



Surrounded by Timeless Beauty

The perfect place to wind down and enjoy the finer things in life after a long working day

LIBRARY LOUNGE



Twin Whirl Pool

Pamper yourself with a steamy hot bath overlooking the skyscrapers of Jakarta





LIBRARY LOUNGE

Take a quick break in our cozy and exclusive lounge from your busy schedule



Fitness Center

Keep your body fit by exercising regularly with our fully functioning exercise room



LUXURIOUS LOBBY

Our 24/7 hours service will cater to your everyday concierge needs

ATOL
ites





EXQUISITE SPACIOUS UNITS

Feel at ease in our well-designed spaces,
as it is equipped for the urban living lifestyle

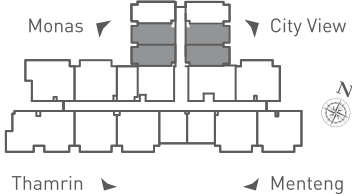


UNIT LAYOUT

Studio - A



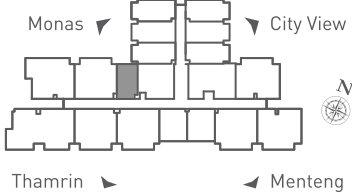
Semi Gross: 36.50 sqm | Nett: 31.84 sqm



Studio - B

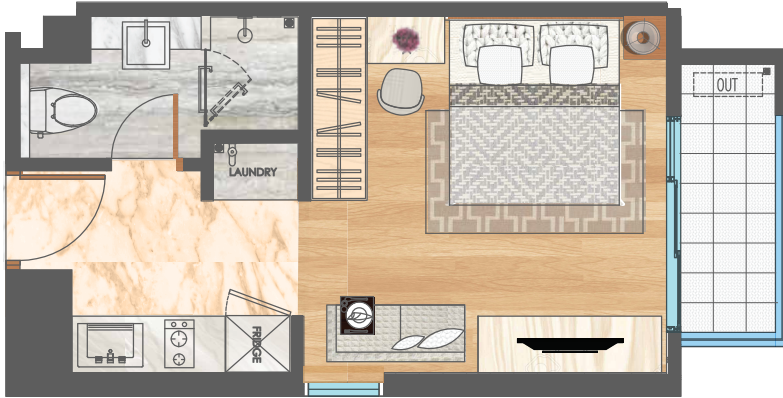


Semi Gross: 28.95 sqm | Nett : 25.26 Nett

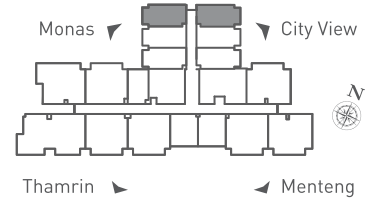


UNIT LAYOUT

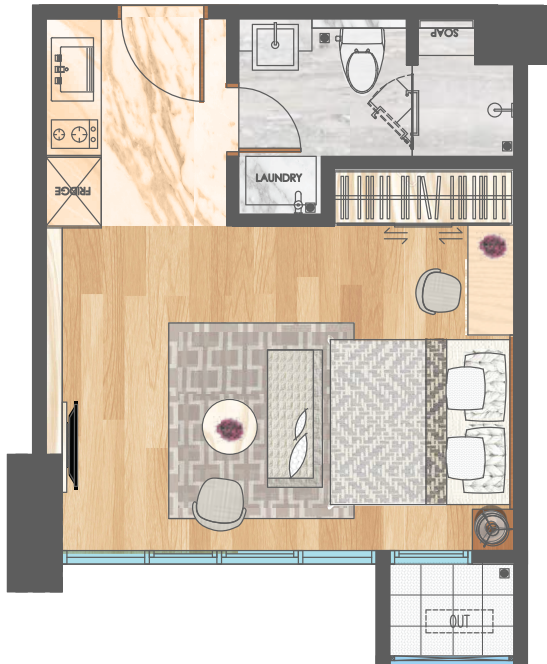
Studio - C



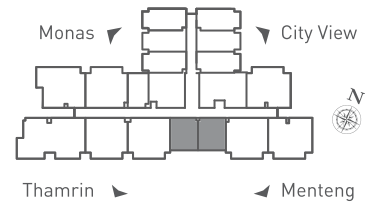
Semi Gross: 37.30 sqm Nett: 32.57 sqm



Studio - D

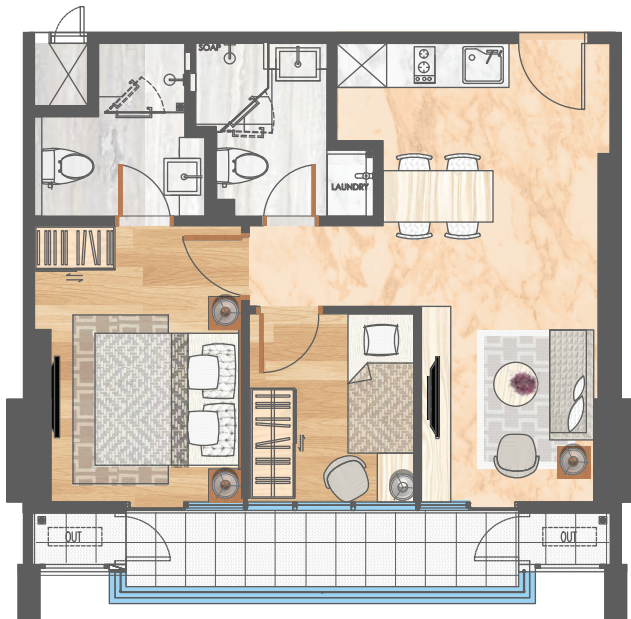


Semi Gross: 36.50 sqm | Nett: 31.85 sqm

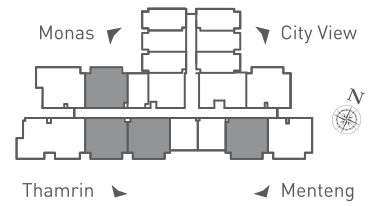


UNIT LAYOUT

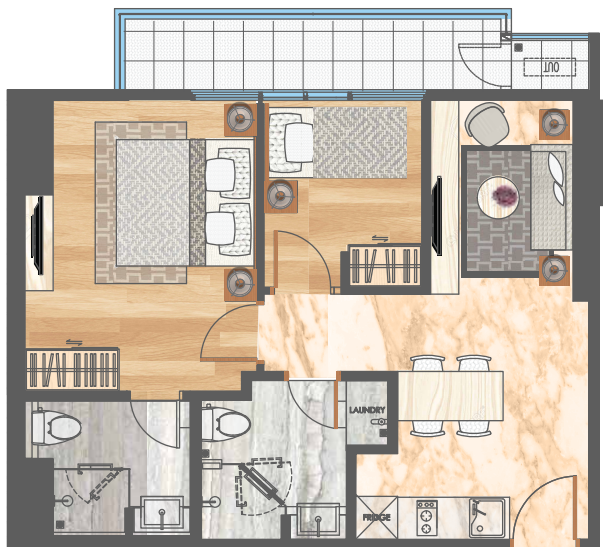
2 Bedroom A



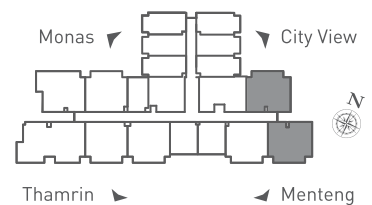
Semi Gross: 67.50 sqm | Nett: 58.92 sqm



2 Bedroom CA

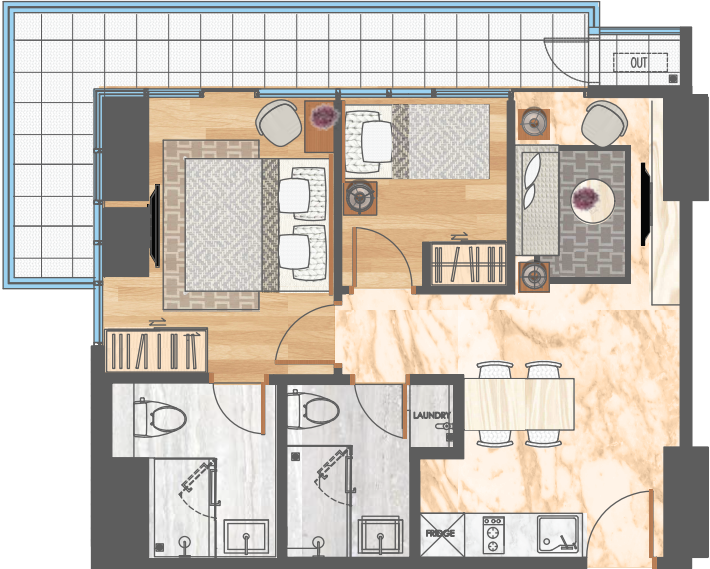


Semi Gross: 70.00 sqm | Nett: 61.12 sqm

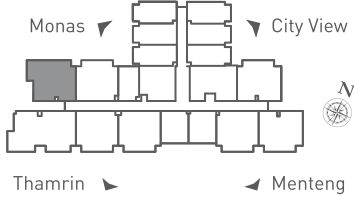


UNIT LAYOUT

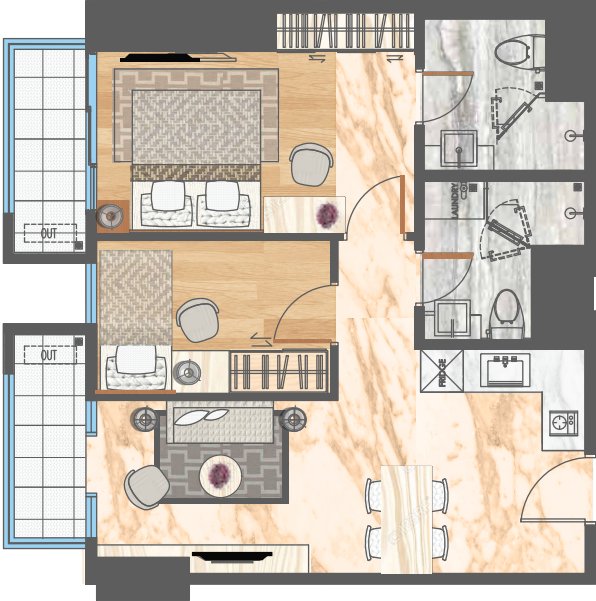
2 Bedroom CB



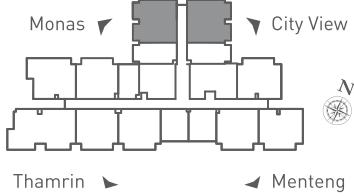
Semi Gross: 74.90 sqm | Nett : 65.37 sqm



2 Bedroom CC

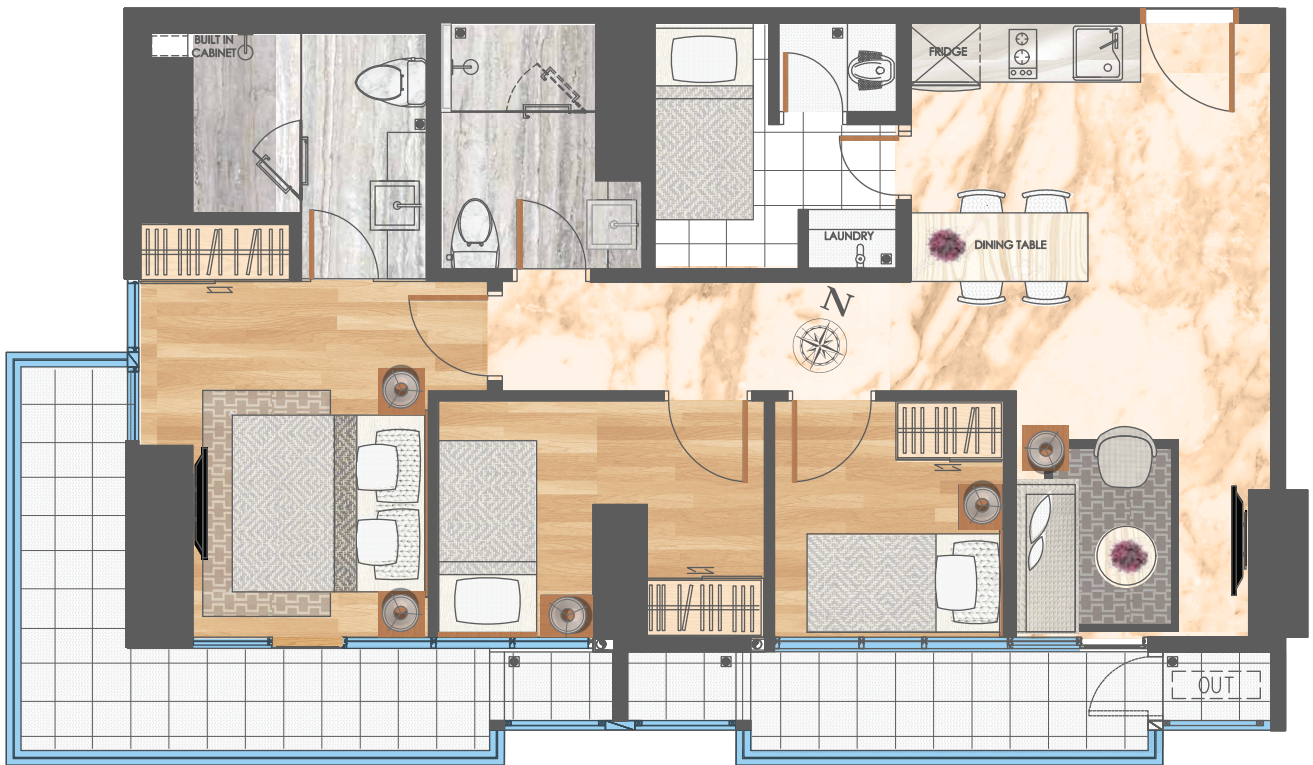
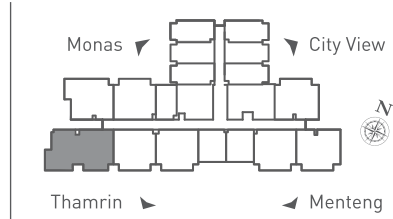


Semi Gross: 73.80 sqm | Nett: 64.41 sqm



UNIT LAYOUT

3 Bedroom CB



Semi Gross: 104.10 sqm | Nett: 90.86 sqm



PROPERTY FACT SHEET

Views : City View, Monas, Thamrin, Menteng

Ceiling Height : ± 2.8 M

Air Conditioning

Living & Dining : Included (Daikin)

All Main Bedrooms : Included (Daikin)

Flooring Finishes

Living & Dining : Marble

All Main Bedrooms : Parquet Laminated Floor

Kitchen & Pantry

- Cabinet Plywood / Duco
 - Stove, Cooker Hood
 - Oven Microwave (Webber Germany)
 - Table Top Marble / Granite / Solid Surface
 - Kitchen Sink Stainless Steel
-

Bathrooms : Grohe

Water Heater : All Bathrooms Provided

Automation & Security : Video Phone, Smarthome (Dynamax)

Lift : Kone

LUXURY UNCOMPROMISED



WEBBER®



VI|VE|RE



Capitol Suites

Developed By The Capitol Group

Architect

Wow Architects, Singapore

Interior Design

Genius Loci, Singapore

While every reasonable care has been taken in the preparation of this brochure and information document, the developer and its agent cannot be held responsible for any inaccuracies. All elements are intended to be correct but are not to be regarded as statement or representation of fact.

Our Commitment To Excellence



THE CAPITOL GROUP

Capitol Group Indonesia is committed to the highest degrees of quality and excellence. We bring closer great aesthetics with practicality to cater to the needs of urban living as a part of our contribution in shaping the city landscape.

Located amongst the golden triangle in the city, the Capitol properties have committed themselves to deliver only the best lifestyle concepts and urban living spaces. Their buildings are state-of-the-art featuring iconic, modern-design and premium facilities that fits our aspiring urbanites.

A force in the industry, Capitol Group is a privately held company that primarily have a stronghold in the property industry. Several of our business practices include plantation, education, finance, travel, to automotive industry. Capitol Group consistently delivers on its commitment to quality by working with best experts in their respective fields. We are highly selective in choosing our partners and this is proven by their standard of excellence.

THE TEAM



WOW ARCHITECTS PTE LTD

For almost two decades, WOW Architects has been building a massive portfolio of premium world-class design that is grounded in conceptual unity. Wow Architects is a member of The Singapore Institute of Architects and The Singapore Green Building Council and has won The Singapore Institute of Architects 2010 Building of the Year Award. With numerous first-class properties under its portfolio, the award-winning firm's versatility has been a great asset in their role as our primary architect.



GENIUS LOCI

The genius behind our marvelous interior, Genius Loci is a leading architecture and design firm based in Singapore with offices in Kuala Lumpur, Shanghai, Chengdu, Jakarta, and Surabaya. Led by seasoned architects Alex Bayusaputro and Benjamin Kim, Genius Loci is founded on the simplicity of the belief that a great design makes you smile. Further, their design is grounded in our shared principle that design is not just about mere aesthetics, but requires a unity with practicality.



COLDWELL BANKER INDONESIA

Founded in 1906, Coldwell Banker is one of the world's leading and premier real estate organizations. With more than 3,000 offices, 84,000 Sales Associates and Brokers in more than 45 countries and territories around the world, the real estate firm is committed to service excellence in property management. Headquartered in New Jersey, USA, the firm has helped numerous investors, developers and tenants balance between maintaining cost and quality.



PT. HAERTE (WIDYA KONSULTANT ENGINEERS)

With an experience of almost three decades, PT. Haerte has numerous high-rise buildings in the country under their belt. The privately held company offers various structural engineering services, ranging from consultation, design review, value engineering design and factory design.



LEX ATELIER

A subsidiary of Lumina Group, Lex Atelier is a collective of designers with great passion for the world of lighting. Consistently innovating, Lex Atelier has incorporated state-of-the-art technology with quality LEDs to build the warm atmosphere offered by our lavish property.



ADHICON

A start-up company, Adhicon is a Jakarta-based engineering contractor that upholds the highest standard in their services. Their high standard of service in construction has given them high profiled projects in various cities in Indonesia. Established in 2013, the contractor has been heralded as one of the best and entrusted with various high profile projects around the country.



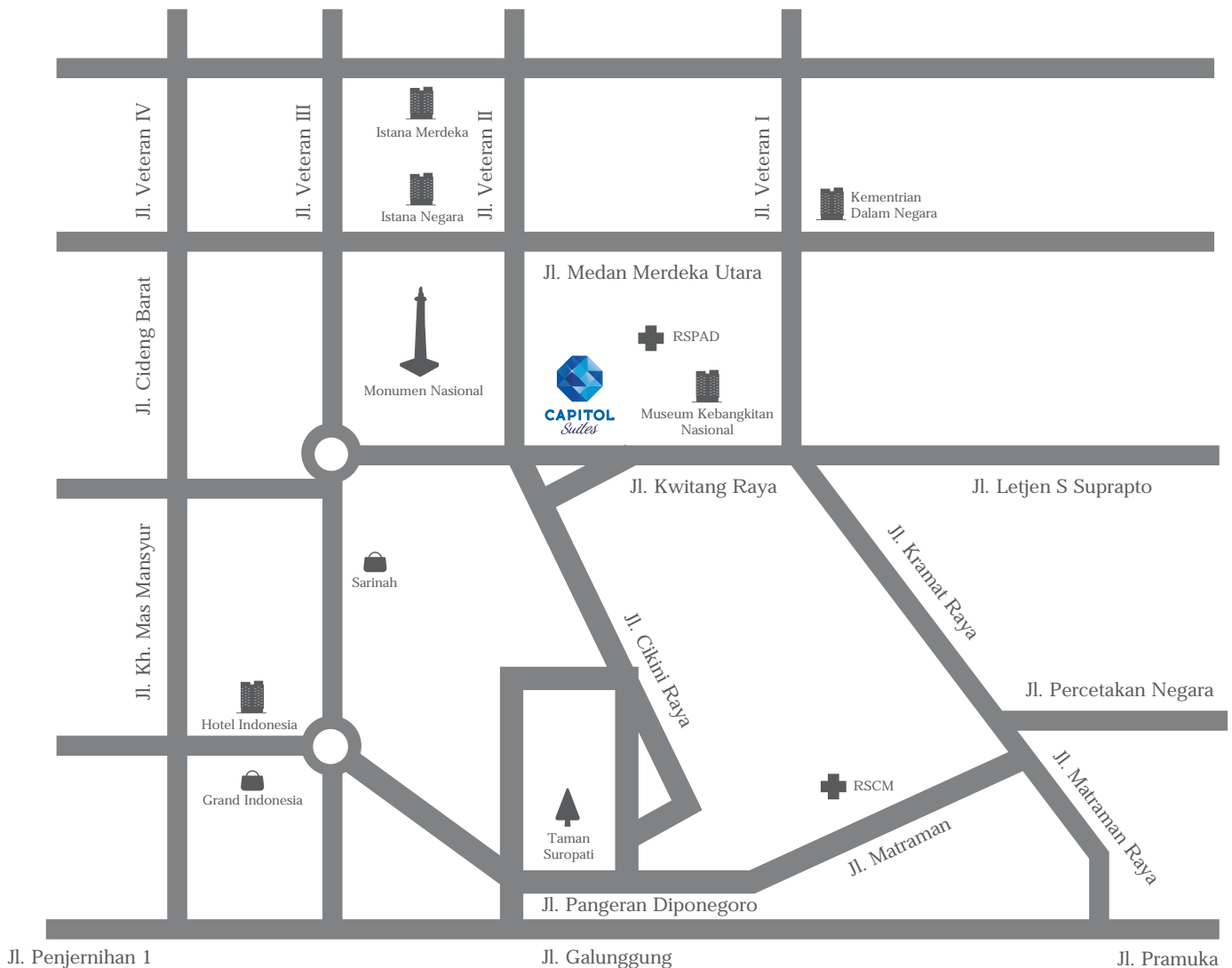
PESONA SELARAS INDONESIA

A reputable landscape design and build consistency services firm, Pesona Selaras Indonesia has shaped the finest green spaces for numerous offices, complexes and campuses. Well known at home and overseas, Pesona Selaras Indonesia provided us with a wide spectrum of our green spaces through their design and consultancy services.

Location Map

Jl. Prajurit KKO Usman Harun No 22 - 24

Tugu Tani Area, Jakarta Pusat



Entertainment Center

Atrium Senen	500m
Grand Indonesia	4km
Plaza Indonesia	4km

International Standard Hospital

RSPAD	500m
Abdi Waluyo	3km
RSCM	3km
Jakarta Eye Center	4km

Transportation

Stasiun MRT Kwitang	50m
Stasiun Senen	500m
Stasiun Gambir	2km

Others

Arya Duta Hotel	500m
Grand Hyatt Hotel	4km
Kempinski Hotel	4km
Pullman Hotel	4km

Education Center

Kanisius	1 km
Bellarminus	3km
St. Theresia	3km
SMA Negri 17	5km

Developed by:



Marketing Office

Jl. Prajurit KKO Usman & Harun Kav. 22 - 24

www.capitolsuites.co.id